

SCHEDA TECNICA – CAMICE SERIOPLUS+
COD. A60109

TESSUTO

DRILL 3/1
100% COTONE IRRESTRINGIBILE
PESO 280 g/m²

DESCRIZIONE

Camice da lavoro con chiusura anteriore con bottoni coperti.
Taschino al petto e due tasche inferiori, polsi con elastico, cuciture di colore a contrasto.

TAGLIE

S, M, L, XL, XXL, XXXL



rossini.

1° categoria per rischi minimi



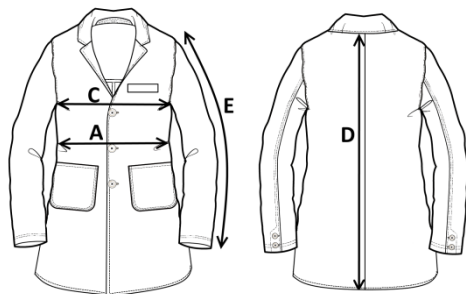
01 - BLU



12 - GRIGIO



01 - BLU



Il margine di tolleranza produttivo, nel rispetto delle dimensioni della taglia, può essere del +/- 3%

SIZE - cm	S	M	L	XL	XXL	XXXL
C - ½ CIRCONFERENZA TORACE	58	61	64	67	70	73
A - ½ CIRCONFERENZA VITA	55	58	61	64	67	70
D - LUNGHEZZA CENTRO DIETRO	92	94,3	96,5	98,8	101	103,3
E - LUNGHEZZA MANICA	64	65,5	67	68,3	69,7	71

TECHNICAL SHEET – SERIOPLUS+ WORK COAT

CODE A60109

FABRIC

Drill 3/1

100% non-shrink cotton

Weight 280 g/m²

DESCRIPTION

Work coat with front closure with covered buttons, breast pocket and two lower pockets, elasticated cuffs, seams of contrasting colour.

SIZES

S, M, L, XL, XXL, XXXL

CE

rossini.

1ST CATEGORY FOR MINIMUM RISKS



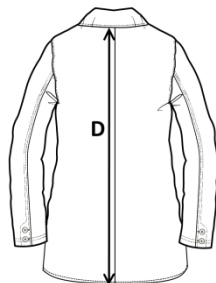
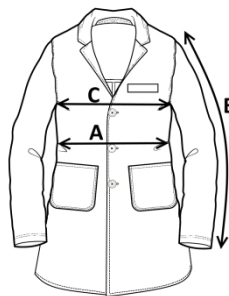
01 - BLUE



12 - GREY



01 - BLUE



Measurements may vary +/- 3%, tolerance within size scale

SIZE - cm	S	M	L	XL	XXL	XXXL
C – ½ CHEST CIRCUMFERENCE	58	61	64	67	70	73
A – ½ WAIST CIRCUMFERENCE	55	58	61	64	67	70
D – CENTER BACK LENGTH	92	94,3	96,5	98,8	101	103,3
E – SLEEVE LENGTH	64	65,5	67	68,3	69,7	71

 **FICHA TÉCNICA – BATA DE HOMBRE SERIOPLUS+**
CÓD. A60109

COMPOSICIÓN

Drill 3/1
100% algodón sanforizado
Peso 280 g/m²

DESCRIPCIÓN

Bata de trabajo con cierre frontal y botones cubiertos, bolsillo en el pecho y dos bolsillos en la parte inferior, puños con elástico, costuras de color en contraste.

TALLAS

S, M, L, XL, XXL, XXXL



rossini.

1ª categoría para riesgos mínimos



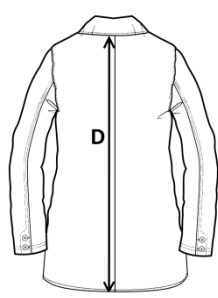
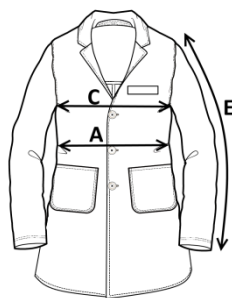
01 - AZUL



12 - GRIS




01 - AZUL



El margen de tolerancia productiva, respetando las dimensiones de la talla, puede ser de +/- 3%

SIZE - cm	S	M	L	XL	XXL	XXXL
C – ½ CIRCUNFERENCIA TORÁCICA	58	61	64	67	70	73
A – ½ CIRCUNFERENCIA DE LA CINTURA	55	58	61	64	67	70
D – LONGITUD CENTRAL ESPALDA	92	94,3	96,5	98,8	101	103,3
E – LONGITUD DE LA MANGA	64	65,5	67	68,3	69,7	71

 **FISA TEHNICA – HALAT SERIOPLUS+**
COD. A60109

MATERIAL

Drill 3/1

100% bumbac care nu intră la apă

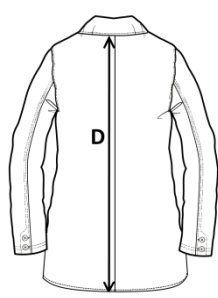
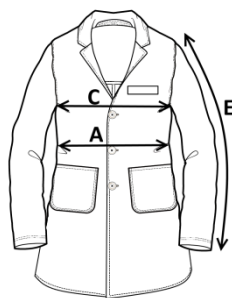
Greutate 280 g/m²

DESCRIERE

Halat de lucru cu închidere în față cu nasturi acoperiți, buzunar mic la piept și două buzunare în partea de jos, manșete cu elastic, cusături de culoare contrastantă.

MĂRIMI

S, M, L, XL, XXL, XXXL



Marja de toleranță a producției, respectând dimensiunile mărimii, poate fi de +/-3%.

SIZE - cm	S	M	L	XL	XXL	XXXL
C – ½ CIRCUMFERINȚĂ TORACE	58	61	64	67	70	73
A – ½ CIRCUMFERINȚĂ TALIE	55	58	61	64	67	70
D – LUNGIME SPATE	92	94,3	96,5	98,8	101	103,3
E – LUNGIME MÂNECĂ	64	65,5	67	68,3	69,7	71



Categoria I
pentru riscuri minime

ROSSINI.



01 - BLEUMARIN



12 - GRI



01 - BLEUMARIN



FICHE TECHNIQUE – BLOUSE DE TRAVAIL SERIOPLUS+
CODE A60109

TISSU

Drill 3/1,
 100% coton non rétrécissable.
 Poids 280 g/m²

DESCRIPTION

Blouse de travail avec fermeture à l'avant avec boutons couverts.
 Poche poitrine et deux poches inférieures, poignets avec élastique, coutures de couleur contrastée.

TAILLES

S, M, L, XL, XXL, XXXL



rossini.

I catégorie pour les risques minimaux



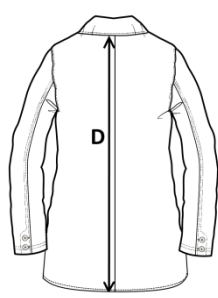
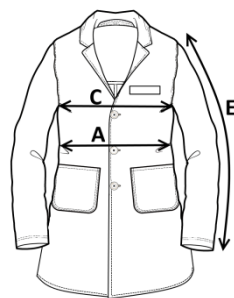
01 - BLEU



12 - GRIS



01 - BLEU



La marge de tolérance de production, dans le respect des dimensions de la taille, peut être de +/- 3 %

SIZE - cm	S	M	L	XL	XXL	XXXL
C – ½ TOUR DE POITRINE	58	61	64	67	70	73
A – ½ TOUR DE TAILLE	55	58	61	64	67	70
D – LONGUEUR CENTRE ARRIERE	92	94,3	96,5	98,8	101	103,3
E – LONGUEUR MANCHE	64	65,5	67	68,3	69,7	71