

# SCHEDA TECNICA – CAMICE UOMO SERIO

COD. A60101

## TESSUTO

Drill 3/1

100% cotone irrestringibile

Peso 280 g/m<sup>2</sup> per colore bianco

Drill 2/1

100% cotone irrestringibile

Peso 210 g/m<sup>2</sup> per colore nero

## DESCRIZIONE

Camice uomo con chiusura con bottoni coperti, collo aperto, schiena intera.

Due tasche e un taschino applicati, senza martingala.

## TAGLIE

Dalla 44 alla 64



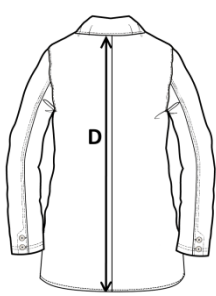
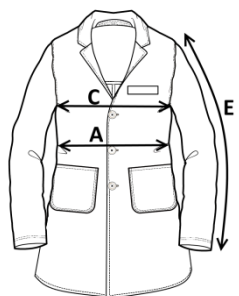
02 – BIANCO



05 – NERO




05 – NERO



Il margine di tolleranza produttivo, nel rispetto delle dimensioni della taglia, può essere del +/- 3%

SIZE - cm	44	46	48	50	52	54	56	58	60	62	64
C – ½ CIRCONFERENZA TORACE	54	56	58	60	62	64	66	68	70	72	74
A – ½ CIRCONFERENZA VITA	52	54	56	58	60	62	64	66	68	70	72
D – LUNGHEZZA CENTRO DIETRO	95,5	97	98,5	100	101,5	103	104,5	106	107,5	109	110,5
E – LUNGHEZZA MANICA	59	60	61	62	63	64	65	66	67	68	69

 **TECHNICAL SHEET – SERIO MEN’S WORK COAT**  
CODE A60101



**rossini.**

1ST CATEGORY FOR MINIMUM RISKS



05 – BLACK



**FABRIC**

Drill 3/1

100% non-shrink cotton

Weight 280 g/m<sup>2</sup> for white colour

Drill 2/1

100% non-shrink cotton

Weight 210 g/m<sup>2</sup> for black colour

**DESCRIPTION**

Men’s work coat with covered button closure, open collar, full back.  
Two patch pockets and a small breast pocket, without half belt.

Two patch pockets and a small breast pocket, without half belt.



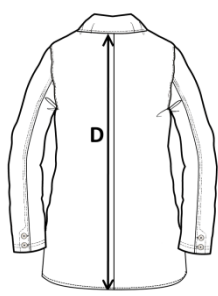
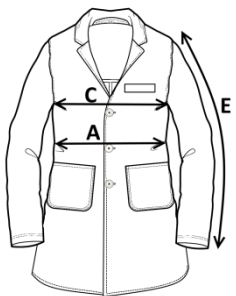
02 – WHITE



05 – BLACK

**SIZES**

From 44 to 64



Measurements may vary +/- 3%, tolerance within size scale

SIZE - cm	44	46	48	50	52	54	56	58	60	62	64
C – ½ CHEST CIRCUMFERENCE	54	56	58	60	62	64	66	68	70	72	74
A – ½ WAIST CIRCUMFERENCE	52	54	56	58	60	62	64	66	68	70	72
D – CENTER BACK LENGTH	95,5	97	98,5	100	101,5	103	104,5	106	107,5	109	110,5
E – SLEEVE LENGTH	59	60	61	62	63	64	65	66	67	68	69

# FICHA TÉCNICA – BATA DE HOMBRE SERIO

CÓD. A60101

## COMPOSICIÓN

Drill 3/1

100% algodón sanforizado

Peso 280 g/m<sup>2</sup> para color blanco

Drill 2/1

100% algodón sanforizado

Peso 210 g/m<sup>2</sup> para color negro

## DESCRIPCIÓN

Bata de hombre con cierre de botones cubiertos, cuello abierto y espalda entera.

Dos bolsillos de parche a los lados y uno en el pecho, sin trabilla.

## TALLAS

De la 44 a la 64

CE...

rossini.

1º categoría para riesgos mínimos



02 – BLANCO



05 – NEGRO

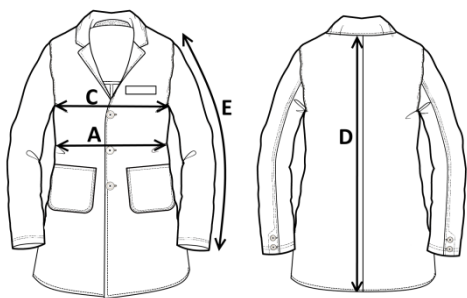


05 – NEGRO



El margen de tolerancia productiva, respetando las dimensiones de la talla, puede ser de +/- 3%

SIZE - cm	44	46	48	50	52	54	56	58	60	62	64
C – ½ CIRCUNFERENCIA TORÁCICA	54	56	58	60	62	64	66	68	70	72	74
A – ½ CIRCUNFERENCIA DE LA CINTURA	52	54	56	58	60	62	64	66	68	70	72
D – LONGITUD CENTRAL ESPALDA	95,5	97	98,5	100	101,5	103	104,5	106	107,5	109	110,5
E – LONGITUD DE LA MANGA	59	60	61	62	63	64	65	66	67	68	69



 **FISA TEHNICA – HALAT SERIO PENTRU BĂRBAȚI**  
COD. A60101

### MATERIAL

Drill 3/1

100% bumbac care nu intră la apă  
Greutate 280 g/m<sup>2</sup> pentru culoarea albă

Drill 2/1

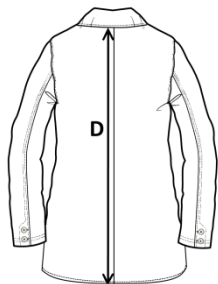
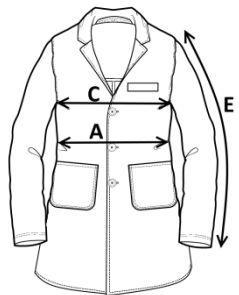
100% bumbac care nu intră la apă  
Greutate 210 g/m<sup>2</sup> pentru culoarea neagră

### DESCRIERE

Halat bărbați cu închidere centrală cu nasturi acoperiți, guler deschis, spate întreg.  
Două buzunare obișnuite și unul mic aplicate, fără martingală.

### MĂRIMI

De la 44 la 64



Marja de toleranță a producției, respectând dimensiunile mărimii, poate fi de +/-3%.

SIZE - cm	44	46	48	50	52	54	56	58	60	62	64
C – ½ CIRCUMFERINȚĂ TORACE	54	56	58	60	62	64	66	68	70	72	74
A – ½ CIRCUMFERINȚĂ TALIE	52	54	56	58	60	62	64	66	68	70	72
D – LUNGIME SPATE	95,5	97	98,5	100	101,5	103	104,5	106	107,5	109	110,5
E – LUNGIME MÂNECĂ	59	60	61	62	63	64	65	66	67	68	69



**rossini.**

Categoria I  
pentru riscuri minime



02 – ALB



05 – NEGRU



05 – NEGRU



**FICHE TECHNIQUE – BLOUSE HOMME SERIO**  
**CODE A60101**



**rossini.**

I catégorie pour les risques minimaux



05 – NOIR



**TISSU**

Drill 3/1

100% coton non rétrécissable

Poids 280 g/m<sup>2</sup> pour la couleur blanche

Drill 2/1

100% coton non rétrécissable

Poids 210 g/m<sup>2</sup> pour la couleur noire

**DESCRIPTION**

Blouse homme avec fermeture avec boutons couverts, col ouvert, dos entier.

Deux poches et une petite poche appliquées, sans martingale.



02 – BLANC

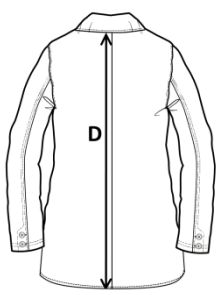
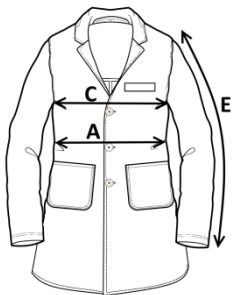


05 – NOIR

**TAILLES**

Du 44 au 64

La marge de tolérance de production, dans le respect des dimensions de la taille, peut être de +/- 3 %



SIZE - cm	44	46	48	50	52	54	56	58	60	62	64
C – ½ TOUR DE POITRINE	54	56	58	60	62	64	66	68	70	72	74
A – ½ TOUR DE TAILLE	52	54	56	58	60	62	64	66	68	70	72
D – LONGUEUR CENTRE ARRIERE	95,5	97	98,5	100	101,5	103	104,5	106	107,5	109	110,5
E – LONGUEUR MANCHE	59	60	61	62	63	64	65	66	67	68	69