

# SCHEDA TECNICA – TUTA BELGRADO

COD. A42401



**ROSSINI.**

1° categoria per rischi minimi



07 - ROSSO

## TESSUTO

Drill 3/1

100% cotone irrestringibile

Peso 250 g/m<sup>2</sup>

## DESCRIZIONE

Tuta da lavoro con chiusura con cerniera centrale, collo alla coreana chiuso con velcro, coda di topo di colore bianco al petto.

Due tasche anteriori applicate, due taschini applicati al petto chiusi con cerniera, elastico in vita posteriore.

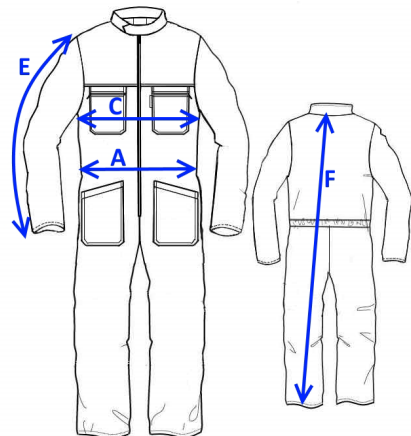
## TAGLIE

S, M, L, XL, XXL



Misure della parte posteriore

SIZE  
S



Il margine di tolleranza produttivo, nel rispetto delle dimensioni della taglia, può essere del +/- 3%

SIZE - cm	S	M	L	XL	XXL
C – ½ CIRCONFERENZA TORACE	56	60	64	68	72
F – LUNGHEZZA TOTALE	153	159	166,5	173,5	178,5
A – ½ CIRCONFERENZA VITA	56	60	64	68	72
E – LUNGHEZZA MANICA	60,4	62,3	64,2	66	68

# TECHNICAL SHEET – BELGRADO OVERALLS

CODE A42401

# rossini.



1ST CATEGORY  
FOR MINIMUM RISKS



07 - RED

## FABRIC

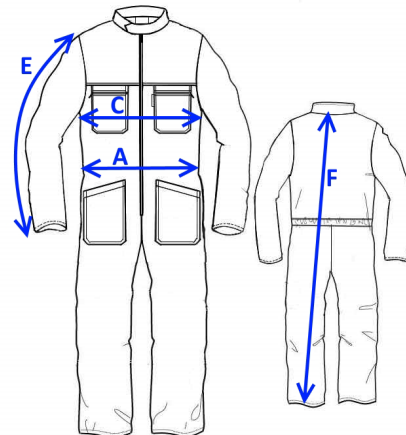
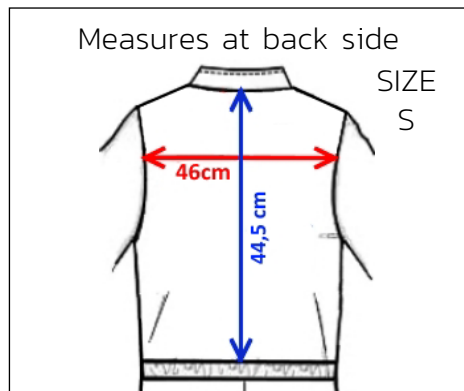
Drill 3/1  
100% non-shrink cotton  
Weight 250 g/m<sup>2</sup>

## DESCRIPTION

Overalls with a central covered zip closure, Korean collar closed with Velcro, white colour piping on the chest.  
Two front patch pockets, two small patch breast pockets with zip closure, elasticated waistband at the back.


## SIZES

S, M, L, XL, XXL



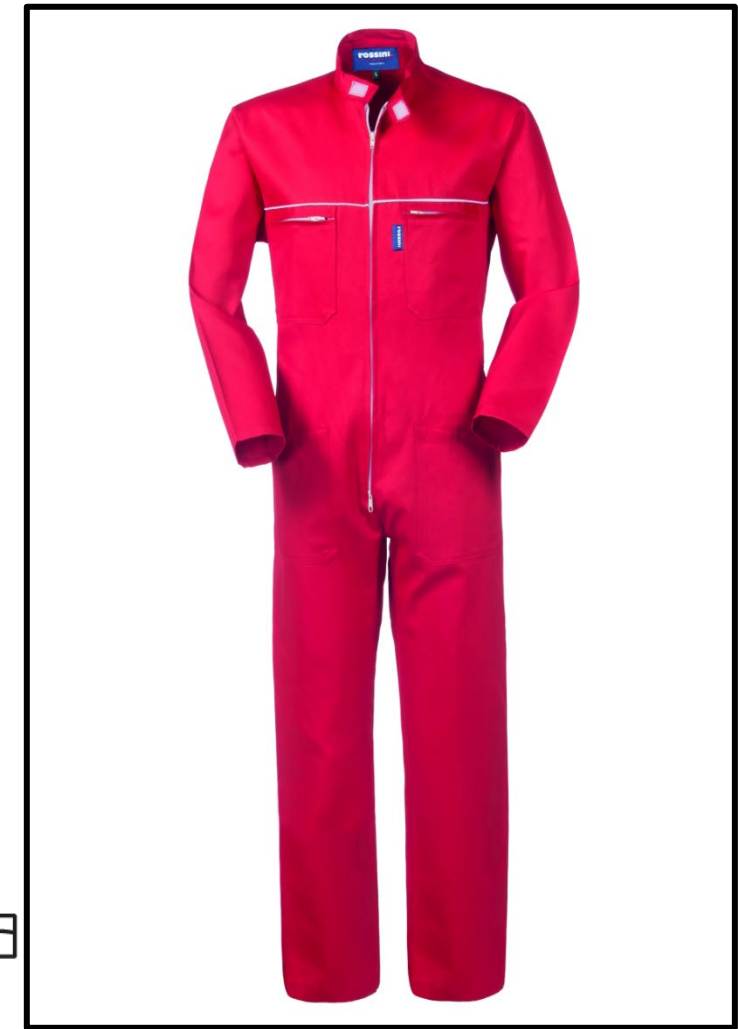
Measurements may vary +/- 3%, tolerance within size scale

SIZE - cm	S	M	L	XL	XXL
C – ½ CHEST CIRCUMFERENCE	56	60	64	68	72
F – TOTAL LENGTH	153	159	166,5	173,5	178,5
A – ½ WAIST CIRCUMFERENCE	56	60	64	68	72
E – SLEEVE LENGTH	60,4	62,3	64,2	66	68

 **FICHA TÉCNICA – MONO BELGRADO**  
CÓD. A42401



1º categoría  
para riesgos mínimos



07 – ROJO



**COMPOSICIÓN**

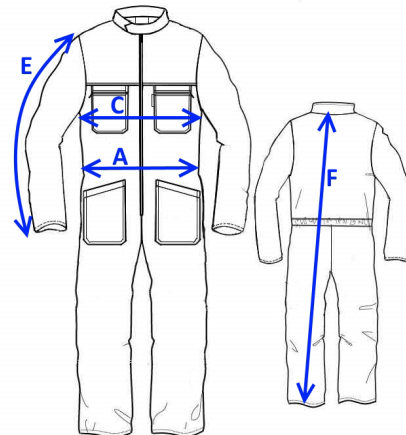
Drill 3/1  
100% algodón sanforizado  
Peso 250 g/m<sup>2</sup>

**DESCRIPCIÓN**

Mono de trabajo con cierre de cremallera en el centro, cuello mao cerrado con velcro, cola de ratón de color blanco en el pecho.  
Dos bolsillos de parche delanteros, dos bolsillos de parche en el pecho cerrados con cremallera, elástico en la parte posterior de la cintura.

**TALLAS**

S, M, L, XL, XXL



El margen de tolerancia productiva, respetando las dimensiones de la talla, puede ser de +/- 3%

SIZE - cm	S	M	L	XL	XXL
C – ½ CIRCUNFERENCIA TORÁCICA	56	60	64	68	72
F – LONGITUD TOTAL	153	159	166,5	173,5	178,5
A – ½ CIRCUNFERENCIA DE LA CINTURA	56	60	64	68	72
E – LONGITUD DE LA MANGA	60,4	62,3	64,2	66	68

# FISA TEHNICA – COMBINEZON BELGRADO

COD. A42401

**ROSSINI.**



Categoria I  
pentru riscuri minime



07 - ROȘU

## MATERIAL

Drill 3/1

100% bumbac care nu intră la apă

Greutate 250 g/m<sup>2</sup>

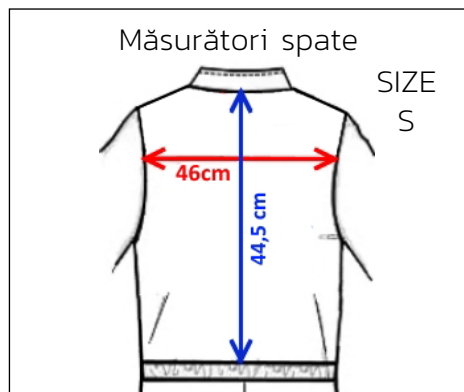
## DESCRIERE

Combinezon de lucru cu închidere cu fermoar central acoperit, guler în stil coreean cu închizătoare scai, bandă îngustă de culoare albă la piept.

Două buzunare aplicate în față, două buzunare mici aplicate pe piept închise cu fermoar, elastic pe talie în spate.

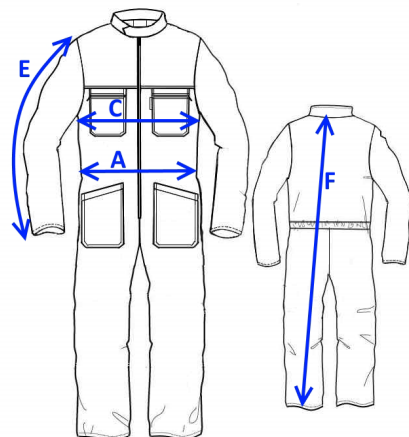
## MĂRIMI

S, M, L, XL, XXL



Măsurători spate

SIZE  
S



Marja de toleranță a producției, respectând dimensiunile mărimii, poate fi de +/-3%.

SIZE - cm	S	M	L	XL	XXL
C – ½ CIRCUMFERINȚĂ TORACE	56	60	64	68	72
F – LUNGIME TOTALĂ	153	159	166,5	173,5	178,5
A – ½ CIRCUMFERINȚĂ TALIE	56	60	64	68	72
E – LUNGIME MÂNECĂ	60,4	62,3	64,2	66	68

# FICHE TECHNIQUE – COMBINAISON BELGRADO

CODE A42401



**ROSSINI.**

I catégorie pour les risques minimaux



07 – ROUGE

## TISSU

Drill 3/1

100% coton non rétrécissable

Poids 250 g/m<sup>2</sup>

## DESCRIPTION

Combinaison de travail avec fermeture Éclair centrale, col Mao fermé avec velcro, queue de souris de couleur blanche à la poitrine.

Deux poches avant appliquées, deux poches appliquées sur la poitrine fermées par une fermeture Éclair, élastique à l'arrière de la taille.

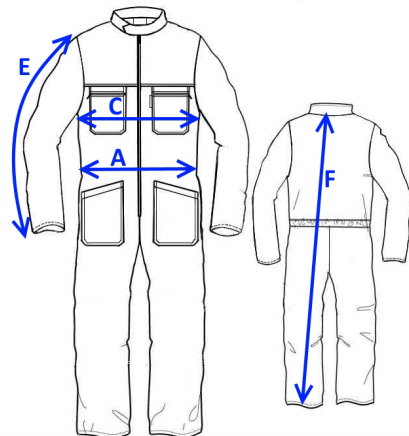
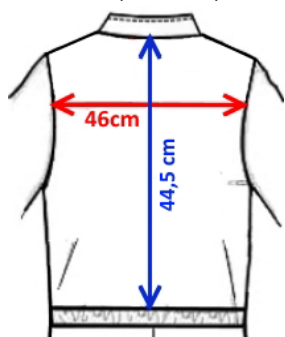
## TAILLES

S, M, L, XL, XXL



Mésure de la partie postérieure

SIZE  
S



La marge de tolérance de production, dans le respect des dimensions de la taille, peut être de +/- 3 %

SIZE - cm	S	M	L	XL	XXL
C – ½ TOUR DE POITRINE	56	60	64	68	72
F – LONGUEUR TOTALE	153	159	166,5	173,5	178,5
A – ½ TOUR DE TAILLE	56	60	64	68	72
E – LONGUEUR MANCHE	60,4	62,3	64,2	66	68