

# SCHEDA TECNICA – COMPLETO POLIESTERE CLIPPER

COD. HH305

## TESSUTO

100% poliestere spalmato in PVC

## DESCRIZIONE

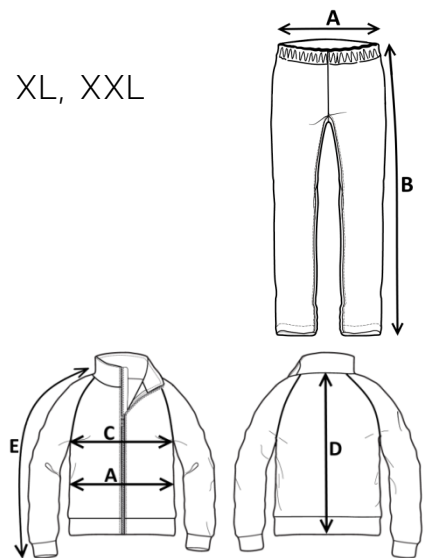
Completo giacca e pantalone con chiusura centrale con zip, cappuccio inserito nel collo, fori di aerazione sotto le ascelle, due tasche anteriori, cordino stringivita ed elastico ai polsi, maniche raglan.

PANTALONE: Elastico girovita, apertura anteriore, due tasche laterali passamano, fondo gamba regolabile con bottone automatico.

Inseriti in busta di poliestere con zip.

## TAGLIE

S, M, L, XL, XXL



Il margine di tolleranza produttivo, nel rispetto delle dimensioni della taglia, può essere del +/- 3%

SIZE - cm	S	M	L	XL	XXL
A – ½ CIRCONF. VITA (ELASTICO TESO)	48	51	54	57	60
B – LUNGHEZZA FIANCO	107	109	112	115	118

SIZE - cm	S	M	L	XL	XXL
C – ½ CIRCONFERENZA TORACE	64	66	68,5	70,5	72,5
A – ½ CIRCONFERENZA VITA	64	66	68	70	72
D – LUNGHEZZA CENTRO DIETRO	74	76	78	81	83
E – LUNGHEZZA MANICA + SPALLA	78	80	82	84	86

CE

rossini.

1° categoria per rischi minimi




04 – VERDE



08 – GIALLO



04 – VERDE

 **TECHNICAL SHEET – CLIPPER POLYESTER SET**

CODE HH305

**FABRIC**

100% polyester coated with PVC

**DESCRIPTION**

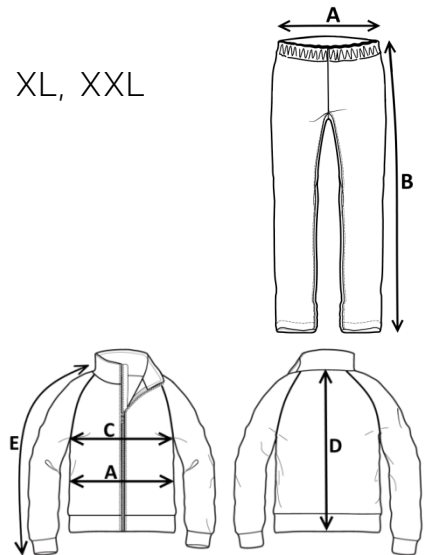
Jacket and trousers set with central zip closure, hood inserted in the collar, air vents under the armpits, two front pockets, waist tightening drawstring and elastic at the cuffs, raglan sleeves.

TROUSERS: Elastic at the waistline, front opening, two side pockets, adjustable leg bottom with snap button.

Supplied in a polyester bag with zip.

**SIZES**

S, M, L, XL, XXL



Measurements may vary +/- 3%, tolerance within size scale

SIZE - cm	S	M	L	XL	XXL
A – ½ WAIST CIRCUMFERENCE (STRETCH ELASTIC)	48	51	54	57	60
B – OUTSEAM	107	109	112	115	118

SIZE - cm	S	M	L	XL	XXL
C – ½ CHEST CIRCUMFERENCE	64	66	68,5	70,5	72,5
A – ½ WAIST CIRCUMFERENCE	64	66	68	70	72
D – CENTER BACK LENGTH	74	76	78	81	83
E – SLEEVE LENGTH + SHOULDER	78	80	82	84	86

CE

**rossini.**

1ST CATEGORY  
FOR MINIMUM RISKS



04 – GREEN



08 – YELLOW



04 – GREEN

 **FICHA TÉCNICA – TRAJE DE AGUA EN POLIÉSTER CLIPPER**  
CÓD. HH305

**COMPOSICIÓN**

100% poliéster con recubrimiento de PVC

**DESCRIPCIÓN**

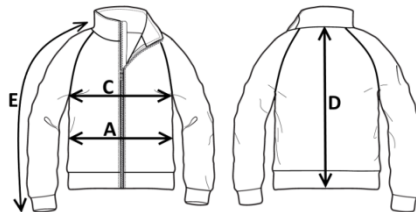
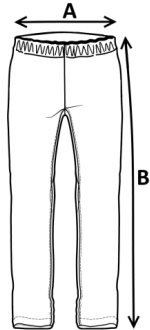
Chaqueta: cierre central con cremallera, mangas raglán, puños elásticos, 2 bolsillos delanteros, capucha insertada en el cuello, cordón de ajuste en la cintura, orificios de ventilación en las axilas.

PANTALÓN: cinturilla elástica, abertura frontal, 2 bolsillos laterales para pasamanos, fondeo de la pierna regulable con botón automático.

Se suministra en una bolsa de poliéster con cremallera.

**TALLAS**

S, M, L, XL, XXL



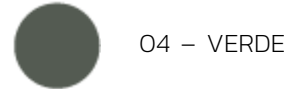
El margen de tolerancia productiva, respetando las dimensiones de la talla, puede ser de +/- 3%

SIZE - cm	S	M	L	XL	XXL
A – ½ CIRCUNFERENCIA DE LA CINTURA (elástico expandido)	48	51	54	57	60
B – LONGITUD DE CADERA	107	109	112	115	118

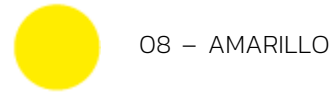
SIZE - cm	S	M	L	XL	XXL
C – ½ CIRCUNFERENCIA TORÁCICA	64	66	68,5	70,5	72,5
A – ½ CIRCUNFERENCIA DE LA CINTURA	64	66	68	70	72
D – LONGITUD CENTRAL ESPALDA	74	76	78	81	83
E – LONGITUD DE LA MANGA + HOMBRO	78	80	82	84	86



1º categoría para riesgos mínimos



04 – VERDE



08 – AMARILLO



04 – VERDE

# FISA TEHNICA – COSTUM DIN POLIESTER CLIPPER

COD. HH305

## MATERIAL

100% poliester aplicat din PVC

## DESCRIERE

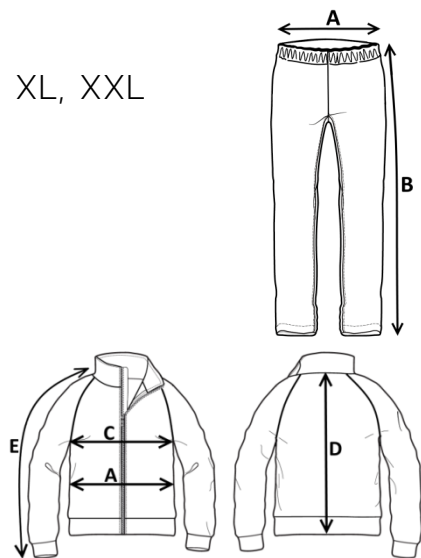
Costum format din jachetă și pantalon cu închidere centrală cu fermoar, capișon inserat în guler, orificii de aerisire la subraț, două buzunare în față, șnur pentru reglare și elastic la manșete, mâneci raglan.

PANTALON: Elastic pe talie, deschidere în față, două buzunare laterale pentru mâini, partea de jos a piciorului reglabilă cu capsă.

Ambalate în pungă de poliester cu fermoar.

## MĂRIMI

S, M, L, XL, XXL



Marja de toleranță a producției, respectând dimensiunile mărimii, poate fi de +/-3%.

SIZE - cm	S	M	L	XL	XXL
A – ½ CIRCUMFERINȚĂ TALIE (ELASTIC STRETCH)	48	51	54	57	60
B – LUNGIME PANTALON FĂRĂ BETELIE	107	109	112	115	118

SIZE - cm	S	M	L	XL	XXL
C – ½ CIRCUMFERINȚĂ TORACE	64	66	68,5	70,5	72,5
A – ½ CIRCUMFERINȚĂ TALIE	64	66	68	70	72
D – LUNGIME SPATE	74	76	78	81	83
E – LUNGIME MÂNECĂ + UMĂR	78	80	82	84	86

CE

**rossini.**

Categoria I  
pentru riscuri minime



04 – VERDE



08 – GALBEN



04 – VERDE

# FICHE TECHNIQUE – ENSEMBLE POLYESTER (VESTE ET PANTALON) CLIPPER

CODE HH305

## TISSU

100% polyester enduit de PVC

## DESCRIPTION

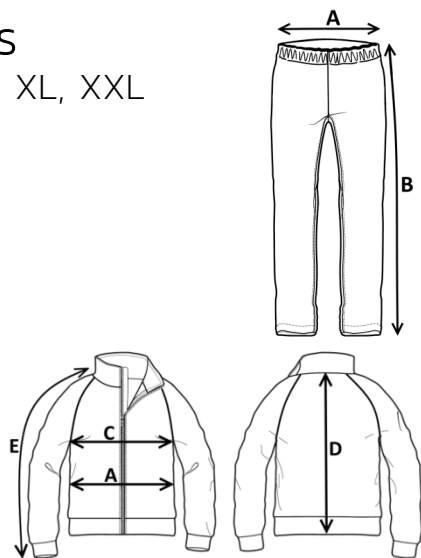
Ensemble veste et pantalon avec fermeture Éclair centrale, capuche insérée dans le col, trous d'aération sous les aisselles, cordon de serrage et élastique aux poignets, manches raglan.

Deux poches frontales, taille élastiquée, ouverture frontale, deux poches latérales passe-main, bas de jambe avec boutons-pression.

Insérés dans un sac en polyester avec fermeture Éclair.

## TAILLES

S, M, L, XL, XXL



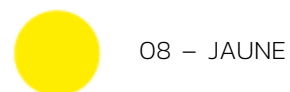
La marge de tolérance de production, dans le respect des dimensions de la taille, peut être de +/- 3 %

SIZE - cm	S	M	L	XL	XXL
A – ½ TOUR DE TAILLE (ÉLASTIQUE TENDU)	48	51	54	57	60
B – LONGUEUR COTE	107	109	112	115	118

SIZE - cm	S	M	L	XL	XXL
C – ½ TOUR DE POITRINE	64	66	68,5	70,5	72,5
A – ½ TOUR DE TAILLE	64	66	68	70	72
D – LONGUEUR CENTRE ARRIERE	74	76	78	81	83
E – LONGUEUR MANCHE+EPAULE	78	80	82	84	86



I catégorie pour les risques minimaux



04 – VERT